

Ostfalia University of Applied Sciences in Wolfenbuettel, Germany, invites you to the International Summer University (ISU 2013).

Meet German and international students, study Knowledge Mining, visit Germany and have fun.



Location: **Ostfalia  
University of Applied Sciences  
Department of Computer Science  
Wolfenbuettel, Germany**

Date: **May 21 – May 31, 2013**  
Registration: **until February 28, 2013**  
Course fees: **400 €, including accommodation,  
breakfast, lunch and excursions**

Web: **[www.isu-cs.ostfalia.de](http://www.isu-cs.ostfalia.de)**

Contact: **Prof. Dr. Lie J. S.**  
Phone: **+49(0) 5331 939 31510**  
E-mail: **[lie@ostfalia.de](mailto:lie@ostfalia.de)**

Ostfalia  
University of Applied Sciences

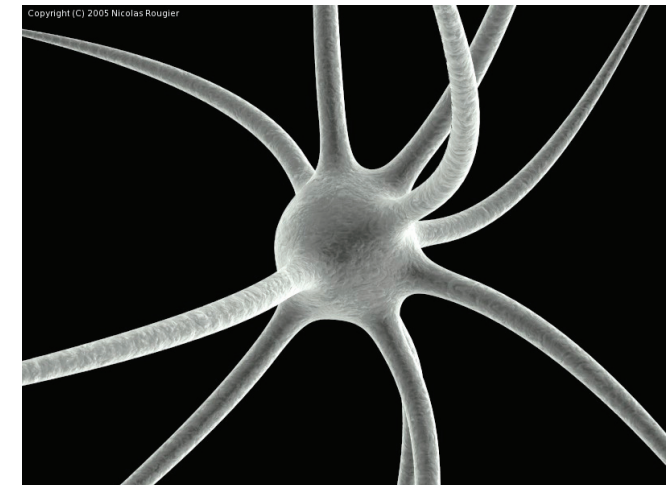
Salzdahlumer Str. 46/48  
38302 Wolfenbüttel

Phone **+49(0) 5331 939 0**  
Fax **+49(0) 5331 939 31004**  
Web **[www.ostfalia.de](http://www.ostfalia.de)**

Study  
**Knowledge Mining**  
and visit **Germany:**

# INTERNATIONAL SUMMER UNIVERSITY

**May 21 – May 31, 2013**  
**Wolfenbuettel, Germany**



## KNOWLEDGE MINING

Studying how to gain knowledge from a huge amount of data.

Knowledge mining can be defined as an iterative process of extracting information and its relationships from data collections e.g. for predicting customer behaviour or for improving new products. Two courses are offered:

### Knowledge Discovery (Course CS I)

(Prof. Dr. J. U. Quevedo, University of Wisconsin-Parkside)

This course is an introduction to Knowledge discovery in both databases and unstructured documents. Participants will discover patterns in data sets using a common association rule mining method. Additionally, participants will propose methods for solving queries from unstructured documents based on text retrieval and natural language processing concepts. Finally, students will develop some software for deductive database applications.

### Data Mining (Course CS II)

(Prof. Dr. F. Klawonn, Ostfalia University of Applied Sciences)

This course will provide an overview on

- typical types of problems and data encountered in data mining,
- the basic algorithms to solve these problems,
- techniques to evaluate the validity of the data analysis results and
- the relation of data mining to classical statistical approaches.

The course includes a hands-on computer lab where the algorithms taught in the class can be applied to real-world data sets to better understand the principles and pitfalls of the different approaches.

## EXCURSIONS AND FIELDTRIPS



125 years ago German pioneers invented the automobile. Today Europe's largest car manufacturer Volkswagen is located in the region of Ostfalia. Meet workers and engineers at the assembly lines and inspect the latest models of Volkswagen.

**Wolfsburg:** Volkswagen Factory Tour and Autostadt

**Hamburg:** Airbus Factory Tour and Harbour Tour

**Wolfenbuettel:** Town walk and Duke August Library

**Braunschweig:** Town walk, Birth place of Carl-Friedrich Gauss

Copyrights:  
Photo of neuron: Nicolas Rougier, 2005  
Photo of Volkswagen plant: Andreas Praefcke (CC-BY 3.0)

## CULTURE AND LANGUAGE

Visit Germany and get an insight into German history, culture and language.

The region Braunschweig/Wolfenbuettel will lead you back to the Middle Ages. In Berlin, Germany's capital, you will come in touch with the former border line between East and West.

**German Language, History and Culture (Course GL)**  
(Prof. PhD. S. Christoph, UWP)

### Berlin, capital of Germany

City tour, Reichstag - Parliament Building, Chancellery, and Former line of the Iron Curtain

